

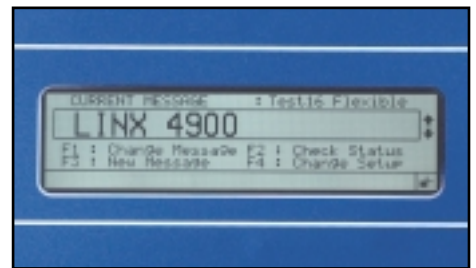
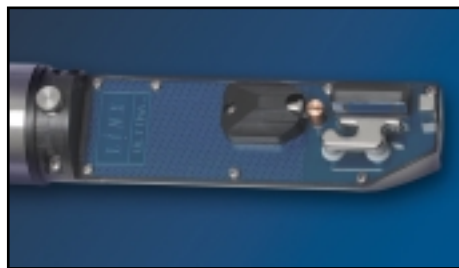
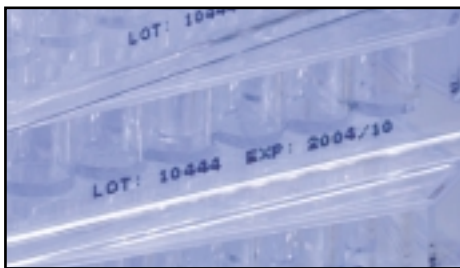
LINX[®] 4900

small character ink jet printer

The Best 2-Line Printer to Date



The ink jet printer for washdown environments



Cleaner.

- Stainless steel cover has no dirt traps and provides a surface off which liquid naturally slides.
- IP55 rating - the new enclosure design is ideal for washdown environments such as food packaging, without the added cost of factory air.
- Autoflush of the printer and conduit at shutdown ensures trouble-free startups.
- Mistake-proof ink and solvent refilling.

Clearer.

- Printhead designed specifically for two-line printing and uses an intelligent jet control system for maintaining print quality.
- Printhead temperature, time of flight and ink pressure are all managed by the printer for trouble-free viscosity control and consistent print quality, with no need for manual intervention.
- Sealed printhead valve system for clean, reliable startups, even after extended shutdowns.
- Clear, simple user interface with WYSIWYG message display means messages are created, selected, edited and printed right first time.

Smarter.

- Designed to minimize the need for user intervention.
- Running parameters are monitored and adjusted by the printer, with clear on-screen diagnostics.
- The user never needs to open the enclosure, thus reducing potential damage to critical components.
- No manual printhead adjustments required.
- Up to 50 messages can be stored and selected via a preview screen for easy identification.
- When printing is finished, simply pressing one button will shut down the printer and switch it off.

 **Diagraph**
An **TW** Company

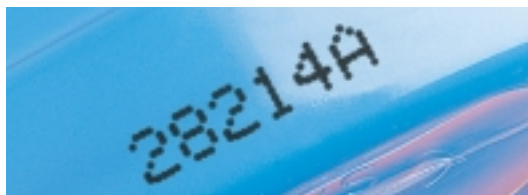


Linx 4900 – High Speed, High Quality, 2-line Printing



Dimensions

Controller	22.75" L x 19.01" W x 9.44" H (578 mm x 483 mm x 240 mm)
Printhead	8.5" L x 1.675" H (225 mm x 42 mm)



For more information on all Diagraph products, specifications, consumables, service, parts and inks, please visit our website:

www.diagraph.com

1 Missouri Research Park Drive
St. Charles, MO 63304
Phone: 800.722.1125
Fax: 636.300.2004

Equipment Group: 800.722.1125
Service, Parts & Inks: 800.526.2531
Label Group: 800.695.0036

© 2004 Diagraph • Printed in U.S.A
SWIFT • 02/04 • 5M



Performance

Printhead	ULTIMA 1 or 2	ULTIMA plus 1 or 2
Lines of print supported	0.08 to 0.30" (2.1 to 7.7 mm)	0.10 to 0.34" (2.6 to 8.8 mm)
Character height range	20.5 fps (6.25 m/s)	23.8 fps (7.28 m/s)
Maximum speed: single line print, wide pitch	2222	2133
Maximum number of characters per second	✓	✓
Standard speed (SS) print option	Optional	Optional
High speed (HS) print option	Optional	Optional
Super high speed (SHS) print option	Optional	Optional
Maximum message length (number of characters)		682
Graphics/logo printing		✓
Number of message types		Up to 9

General features

Single button startup and shutdown	✓
Menu-driven message creation and editing	✓
Integral QWERTY keypad (full size)	✓
WYSIWYG message display	✓
High brightness back-lit LCD display with adjustable contrast (black on white, 256x64 pixels)	✓
Mistake proof mess free ink and solvent refilling	✓
Auto printhead and conduit flush	✓
Auto power off	✓
Choice of operator languages	21
Printer status indicators (4 LEDs)	✓
Full on-screen diagnostics	✓
Password protected functions	✓

Programming and printing facilities

Fixed and variable text	✓
Upper-case and lower-case characters	✓
Bold factor up to 9 times	✓
Character height, width and delay functions	✓
Automatic formats for shift coding, dates and times	✓
Flexible date and time format options	✓
Real-time clock functions	✓
Automatic date forward function	✓
Batch coding and counting	✓
Sequential numbering	✓
Reverse printing	✓
Timed-message function	✓
LogoJet® PC-based message and logo creation software	Optional
DDE Driver for PC application development	Optional

Memory capacity

Message storage capacity (number of messages)	Up to 50
Logo storage capacity on PROM (number of logos)	Up to 100

Printhead options

Ultima (62µm)	✓
Ultima plus (75µm)	✓
90° printhead configuration	Optional
6.56 ft. conduit (2 m)	✓
13.12 ft. conduit (4 m)	Optional
Positive air purge to printhead	Optional
Cutaway printhead cover tube	Optional
Magnetic shielded cover tube	Optional

Ink range

Linx MEK base (dye/pigmented excluding white)	✓
Linx mixed base	✓
Linx ethanol base	✓

Connections/interfacing for

Shaft encoder	✓
Product detector	✓
External single stage alarm output	✓
RS232	✓
Volt-free contact alarm connection	Optional
LogoJet® and DDE Driver software	Optional

Physical characteristics

Stainless steel base and cover	✓
Environmental protection rating	IP55
Mounting options	Bench or console
Operating temperature range	41 - 113° F (5 - 45°C)
Humidity range (relative humidity, non-condensing)	10 - 90%
Power supply	100 - 230V 50/60Hz
Power rating	200W
Weight	44 lb. (20 kg)

Regulatory approvals

TÜV/GS, CE mark, FCC	✓
----------------------	---