

## PRODUCT SPECIFICATIONS

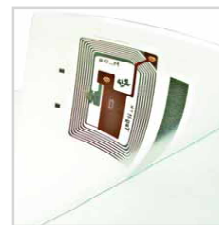
# I-CLASS (RFID)



▪ I-4210    ▪ I-4308    ▪ I-4212    ▪ I-4406    ▪ I-4604

Datamax introduces the only "RFID Ready" printer available to meet the needs of all potential RFID smart label users. The I-Class RFID Ready printer is available now for users who are interested in incorporating RFID in the future. This printer features all of the benefits and modularity of the Datamax I-Class printer, with the addition of a field-installable RFID module available from Datamax. The Datamax I-Class RFID printer currently supports the ISO 15693 high frequency (13.56 MHz) standard and will soon support a UHF option for ISO and/or EPC compliance.

The global evolution of the Auto-ID industry has led many companies to search for faster and more efficient tools for automatic identification processes. RFID is emerging as one of these tools, as supported by the pending Wal-Mart and Department of Defense requirements for tagging of inbound goods for distribution through their supply chain. As a leading automatic identification equipment manufacturer, including printers, labels and integration tools, Datamax understands customers' needs for flexible products that are scalable and robust for current and future needs.



Many Datamax customers are finding smart label applications are appropriate to address business challenges that were previously outside the realm of automatic identification technologies. Smart labels incorporate an RFID (Radio Frequency Identification) tag into a traditional thermal label allowing users to combine graphical and radio frequency data in one application. Smart label applications include supply chain tracking, inventory management, Work-In-Process control and many other traditional automatic identification functions. The Datamax RFID Ready printer allows users to economically print labels now, and seamlessly incorporate RFID encoding capabilities in the future.

THE I-CLASS RFID SOLUTION  
from Datamax is ideal for many applications:

- Logistics Management
- Baggage Tags
- Retail/Apparel
- Inventory Control
- Library Systems
- Asset/People Tracking
- Anti-Theft

# DATAMAX®

[www.datamaxcorp.com](http://www.datamaxcorp.com)



#### CORPORATE HEADQUARTERS

4501 Parkway Commerce Blvd.  
Orlando, Florida USA 32808  
Phone (407) 578-8007  
Fax (407) 578-8377  
[customercare@datamaxcorp.com](mailto:customercare@datamaxcorp.com)

#### DATAMAX LABELS AND RIBBONS

Phone (800) 321-2233  
Fax (800) 436-8920  
[dmxmedia@datamaxcorp.com](mailto:dmxmedia@datamaxcorp.com)

#### DATAMAX LATIN AMERICA

Phone (407) 523-5520  
Fax (407) 578-8377  
[tdelgado@datamaxcorp.com](mailto:tdelgado@datamaxcorp.com)

#### DATAMAX INTERNATIONAL

Phone +44 1279 772200  
Fax +44 1279 424448  
[rbyrne@datamaxcorp.com](mailto:rbyrne@datamaxcorp.com)

#### DATAMAX ASIA-PACIFIC REPRESENTATIVE OFFICE

Phone +65-542-2611  
Fax +65-542-3611  
[datamax@pacific.net.sg](mailto:datamax@pacific.net.sg)

#### DATAMAX CHINA REPRESENTATIVE OFFICE

Phone 8613501229610  
[datamax\\_cn@china.com](mailto:datamax_cn@china.com)

# PRODUCT SPECIFICATIONS

## I-CLASS (RFID)

	I-4210 RFID	I-4308 RFID	I-4212 RFID	I-4406 RFID	I-4604 RFID
<i>All I-Class rfid printers support both Texas Instruments Tag-IT and Philips I-Code transponders</i>					
PRINT SPEED	10 IPS	8 IPS	12 IPS	6 IPS	4 IPS
RESOLUTION	203 DPI	300 DPI	203 DPI	406 DPI	600 DPI
PRINT WIDTH	4.10" (104 mm)	4.16" (105.7 mm)	4.10" (104 mm)	4.10" (104 mm)	4.16" (105.7mm)
PRINT LENGTH*	0.25" – 99" (6.35mm – 2475.6mm)	0.25" – 99" (6.35mm – 2475.6mm)	0.25" – 99" (6.35mm – 2475.6mm)	0.25" – 84" (6.35mm – 2133.6mm)	0.25" – 55" (6.35mm – 1397.0mm)
MEMORY	2MB Flash; 16MB SDRAM	2MB Flash; 16MB SDRAM	2MB Flash; 16MB SDRAM	2MB Flash; 16MB SDRAM	2MB Flash; 16MB SDRAM
PRINTER TYPE	Direct Thermal, Optional Thermal Transfer				
BAR CODE MODULUS	5 mil to 150 mil (203 dpi); 3.3 mil to 150 mil (300 dpi); 2.5 mil to 150 mil (406 dpi); 1.6 mil to 150 mil (600 dpi) "X" dimension in picket fence or ladder orientations				
MEDIA WIDTH	1" – 4.65" (25.4mm – 118.11mm)				
MEDIA TYPE	Roll-fed or fan-fold materials, die-cut or continuous labels; perforated or continuous tag/ticket stock				
MEDIA THICKNESS	.0025" – .0100" (.0635mm – .254mm)				
MEDIA SENSING	Adjustable sensor detects "see through" for liner-backed die-cut labels and tags or reflective sensing for media with black stripe sensing				
SUPPLY ROLL	8" (203mm) maximum diameter on 1.5" – 3" (38mm – 76mm) core. Fan-fold stock accepted from rear of printer				
REVOLVING MEDIA HUBS	Standard 3" and 1.5" hubs, optional 40mm				
RIBBONS	Industry standard ribbon widths; 1" (25mm) ribbon core, 1968' (600M) in length				
CABINET	Metal construction, clear side window to easily monitor media supply levels				
BAR CODES	Code 3 of 9, UPC-A, UPC-E, Interleaved 2 of 5, Code 128, EAN-8, EAN-13, HIBC, Codabar, Plessey, UPC 2 and 5 digit addendums, Code 93, Postnet, UCC/EAN Code 128, Telepen, UPS MaxiCode, FIM, PDF417, USD-8, Datamatrix, QR Code, Aztec, TLC 39, Micro PDF417				
RESIDENT FONTS	Ten alphanumeric fonts from .035" (.89mm) to .64" (16.26mm) including OCR-A, OCR-B, CG Triumvirate™, CG Triumvirate Bold Condensed™ scalable font from AGFA®.				
DOWNLOADABLE FONT TYPES	True-Type, AGFA® Intellifont™, Bitmap				
CHARACTER SET	Modified IBM® Code Page 850; includes characters for English and most European, Scandinavian and Spanish speaking countries. Scalable fonts can be used with over 50 resident character sets.				
FONT EXPANSION/ROTATION	All fonts expandable vertically and horizontally up to 24x; fonts and graphics can be printed in four directions: 0°, 90°, 180° and 270°				
GRAPHICS SUPPORTED	.PCX, .BMP and .IMG files				
REVERSE FIELDS/MIRROR IMAGE	Any font or graphic field can be printed as a normal or reverse image				
INTERFACES	Centronics® Parallel port, IEEE 1284 compliant and RS232 at 2,400 to 38,400 BPS; optional Ethernet, USB, and Twinax/Coax				
WINDOWS® DRIVER	Used for creating label formats using virtually any Windows®-based program. Included on Datamax Accessories CD, or via our web site at <a href="http://www.datamaxcorp.com">www.datamaxcorp.com</a>				
POWER SOURCE	Auto-sensing 90 – 132 or 180 - 264 VAC @ 47 – 63 Hz, auto-ranging; specify appropriate power cord when ordering				
OPERATING TEMPERATURE	32°F to 100°F (0°C to 38°C)				
DIMENSIONS	12.70" H x 12.62" W x 18.60" D (322.6mm H x 320.6mm W x 472.5mm D)				
WEIGHT	45 lbs., 20.5Kg				

### DATAMAX I-CLASS (RFID) OPTIONS:

- THERMAL TRANSFER
- DMXNet ETHERNET CONNECTIVITY
- FONT EXPANSION CARD
- USB INTERFACE
- ILPC - CG TIMES™ FIRMWARE
- RS-422 INTERFACE
- INTERNAL REWIND
- I/O EXPANSION CARD
- TWINAX / COAX INTERFACE
- HANGUL, SIMPLIFIED CHINESE, AND KANJI FONT SUPPORT



www.datamaxcorp.com

Built to UL, Canadian, and European safety standards, FCC Class A emissions standard and CE Mark. This data sheet is for informational purposes only. DATAMAX MAKES NO WARRANTIES, EXPRESSED OR IMPLIED IN THIS SUMMARY. Specifications are subject to change without notice. All trademarks are the property of their respective owners. ©2004 DATAMAX BAR CODE PRODUCTS CORPORATION. All rights reserved. Datamax is an ISO 9001 registered company.