

## Frames

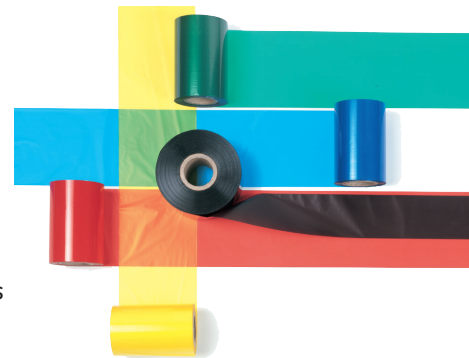
### CUSTOM FRAME DESIGN

If a standard frame assembly does not meet your specific application requirements, we are able to offer custom design and manufacturing services using the latest in 3D modeling software.

## Films

Norwood's thermal transfer ribbons have been specifically developed for thermal transfer printers and produce high quality images, even in high-speed printing. Different combinations of waxes and resins, the composition of which is coordinated with the respective material to be printed on, are used to produce print images with a high scratch-resilience and durability in every application. Custom colors are available.

Our expert team will find the perfect solution for your specific application. Extensive market experience in the coding industry enables us to offer you many different products and services from a single source.



## Service

We pride ourselves on superior sales & service. Our Help Desk Technicians are available via phone, e-mail, and online chat. Our factory-trained technicians have remote access to all documentation and drawings.

- **ON-SITE SERVICE AND REPAIRS**
- **IN-HOUSE SERVICING**
- **CUSTOMER TRAINING**



we mark your products.



Our NGT Series of thermal transfer printers, developed and produced in Germany, allow printing of variable information from 2" – 8" in width onto product packaging.

The NGT8 is the largest of these systems, which can accommodate larger print areas that previously required multiple printers. Installation onto labeling and packaging machines is simplified through its compact design.

The printers can be switched between intermittent or continuous motion through software. Networking of the printers is possible via your PC or our a:touch, which can accommodate up to 10 printers.

These systems can print a wide variety of information: bar codes, text, graphics, real-time date coding and serialization. Print quality is assured even at high speed, a requirement within the pharmaceutical packaging industry.



ITW Marking and Coding Division  
1 Research Park Drive  
Saint Charles, MO 63304  
1-800-722-1125  
[www.itwnorwood.com](http://www.itwnorwood.com)

we mark your products.



## NGT Series

[www.itwnorwood.com](http://www.itwnorwood.com)





Food

Pharmaceutials

Packaging

Automotive

Cosmetic

Chemical Industry



Printer	NGT2	NGT2+	NGT4	NGT4+	NGT6	NGT6e	NGT8	NGT8e
Print area (HxW) intermittent <sup>1</sup>	Max.: 53 x 75 mm 2.1 x 3 inches	Max.: 53 x 75 mm 2.1 x 3 inches	Max.: 107 x 90 mm 4.2 x 3.5 inches	Max.: 107 x 90 mm 4.2 x 3.5 inches	Max.: 160 x 100 mm 6.3 x 3.9 inches	Max.: 160 x 155mm 6.3 x 6.1 inches	Max.: 213 x 155mm 8.4 x 6.1 inches	Max.: 213 x 155mm 8.4 x 6.1 inches
Print speed intermittent	Min.: 50 mm/sec 2 in/sec Max.: 600 mm/sec 23.6 in/sec	Min.: 50 mm/sec 2 in/sec Max.: 600 mm/sec 23.6 in/sec	Min.: 50 mm/sec 2 in/sec Max.: 500 mm/sec 19.6 in/sec	Min.: 50 mm/sec 2 in/sec Max.: 500 mm/sec 19.6 in/sec	Min.: 50 mm/sec 2 in/sec Max.: 300 mm/sec 11.8 in/sec	Min.: 50 mm/sec 2 in/sec Max.: 300 mm/sec 11.8 in/sec	Min.: 50 mm/sec 2 in/sec Max.: 250 mm/sec 9.8 in/sec	Min.: 50 mm/sec 2 in/sec Max.: 250 mm/sec 9.8 in/sec
Performance at 5mm print height (Prints per Min) <sup>2</sup>	650	650	550	550	320	320	300	300
Print area (HxW) continuous <sup>1</sup>	Max.: 53 x 1000 mm 2.1 x 39 inches	Max.: 53 x 1000 mm 2.1 x 39 inches	Max.: 107 x 1000 mm 4.2 x 39 inches	Max.: 107 x 1000 mm 4.2 x 39 inches	Max.: 160 x 1000 mm 6.3 x 39 inches	N/A	Max.: 213 x 1000 mm 8.4 x 39 inches	N/A
Print speed continuous	Min.: 3 m/min 9.8 ft/min Max.: 35 m/min 115 ft/min	Min.: 3 m/min 9.8 ft/min Max.: 35 m/min 115 ft/min	Min.: 3 m/min 9.8 ft/min Max.: 29 m/min 95 ft/min	Min.: 3 m/min 9.8 ft/min Max.: 29 m/min 95 ft/min	Min.: 3 m/min 9.8 ft/min Max.: 17 m/min 56 ft/min	N/A	Min.: 3 m/min 9.8 ft/min Max.: 14 m/min 46 ft/min	N/A

Number of printheads	N/A							
Ribbon rewind speed	N/A							
Print resolution	12 dots/mm (300 dpi²)	12 dots/mm (300 dpi²)	12 dots/mm (300 dpi²)	12 dots/mm (300 dpi²)	12 dots/mm (300 dpi²)	12 dots/mm (300 dpi²)	12 dots/mm (300 dpi²)	12 dots/mm (300 dpi²)
Dimensions printer (HxWxD)	213 x 202 x 168 mm 8.4 X 8.0 X 6.6 inches	213 x 202 x 208 mm 8.4 x 8.0 x 8.2 inches	213 x 202 x 224 mm 8.4 x 8.0 x 8.8 inches	213 x 202 x 263 mm 8.4 x 8.0 x 10.3 inches	213 x 202 x 283 mm 8.4 x 8.0 x 11.1 inches	213 x 262 x 283 mm 8.4 x 10.3 x 11.1 inches	213 x 202 x 337 mm 8.4 x 8.0 x 13.3 inches	213 x 262 x 337 mm 8.4 x 10.3 x 13.3 inches
Weight	7.5 kg (17 lb)	8 kg (18 lb)	9 kg (20 lb)	9.5 kg (21 lb)	11.6 kg (26 lb)	14 kg (31 lb)	14 kg (31 lb)	14 kg (31 lb)
No restriction for width substrate	NO							
Max. ribbon length at 4,5 micron	450m	450m	450m	450m	450m	600m	450m	600m
Air pressure	1.5 - 5 bar (22-72 psi)							

Operating environment	5-40°C, humidity 20-75% non-condensing							
IP rate	IP20	IP20 (Power supply IP65)	IP20	IP20 (Power supply IP65)	IP20	IP20	IP20	IP20
Inverted version available	YES	NO	YES	NO	YES	NO	YES	NO
Control unit with or without touch screen	YES	NO	YES	NO	YES	YES	YES	YES

Features / Print format

Automatic functions	Real time, various date formats (with offset), counter, variable field, formula							
Fonts	7 Internal fonts (OCRA, OCRB, Gill Bold, Helvetica Medium, Century Gothic, Arial Bold, Arial Medium) to be turned in steps of 90°, up to 50 fonts expandable by the customer							
Internal barcodes	GS1-Datamatrix, Datamatrix (ECC200), GS1-128, Code 128, EAN 13, EAN 8, UPC-A, UPC-E, Code39, Code 2/5 Interleaved, ITF14							

Host line connections

Error, Inhibit, Low ribbon, Print on cycle, Trigger, Reset, Ribbon out	YES	YES	YES	YES	YES	YES	YES	YES
Encoder signal	N/A	N/A	N/A	N/A	N/A	YES	N/A	YES

<sup>1</sup> Tolerances apply | <sup>2</sup> approximately

Control Units



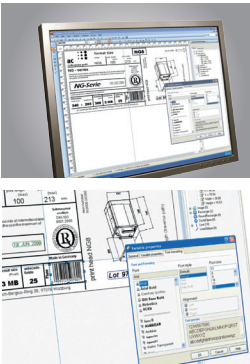
	NGT control unit	a:touch
Touch screen size	5.5 inch (optional)	10.4 inch
Resolution	240 x 128 pixel	800 x 600 pixel
Dimensions (WxHxD)	335 x 141 x 228 mm	264 x 209 x 55 mm
Weight (kg)	6.6	2.5
Ethernet	1x 10/100 Mbit	2x 10/100/1000 Mbit
USB2.0 Typ A	1	2
RS232	1	1
Electrical connection	110V - 240V, 50/60 Hz	110V - 240V, 50/60 Hz
Consumption	Max.: 1.7A	Max.: 1.6A
IP rate	IP140	IP65 (front) IP20 (chassis)
Operating environment	5-40°C humidity 20-75% non-condensing	0-50°C humidity 5-80% non-condensing
Compatible systems	NGT	XL, NGT, NGT+

Network and Software Solutions

We are able to offer software solutions for printer control and print image design appropriate for most coding applications. If you need a custom software solution, please contact us and we will gladly help you.

DESIGN-SOFTWARE

Our label design software poses no limitations related to product marking and network requirements.



A:DESIGN2  
STATE-OF-THE-ART SOFTWARE  
FOR PRINT IMAGE DESIGN

a:design2 Is state-of-the-art software for print image design by Allen Coding easily adaptable to your personal needs. Its simple and intuitive interface permits quick and highly professional design of print images.

Even complex print images can be designed and transferred to the printer with surprising ease. Multiple printers can be set up in a network environment very quickly due to the well-structured configuration tools implemented in a:design2.