

ALLEN MLi Series Multi-Head Printers

The Allen MLi Series printers are multiple head thermal transfer print systems that are ideal for manufacturers looking for high resolution, high throughput printing on several lanes of indexing web material. Designed for easy integration into multi-lane form, fill and seal machines, the Allen MLi Series printers utilize a single roll of ribbon and a single controller across all lanes of print.

WEB CODING 

SERIES FEATURES

- **Flexible, centralized message creation** for individual and batch messages across all printheads
- **Multiple standard configurations** featuring frame sizes of 620 mm, 820 mm, and 1020 mm allow you to scale the system to unique application requirements
- **Single modular streamlined design** with minimal cabling allows for easy integration with other machines

MLi-TE System

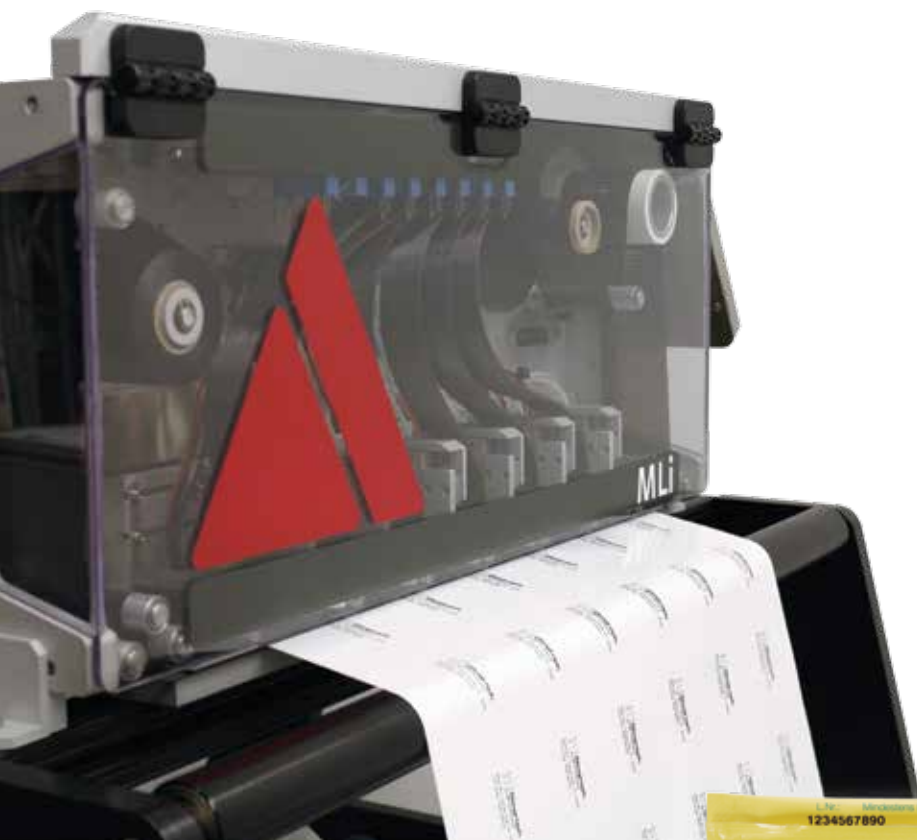
For More Lanes of Print

- True Edge thermal bars are optimal for small gaps between prints in up to 12 lanes
- Prints up to 800 messages per minute with up to 12 thermal printheads and a high speed shuttling carriage
- Less downtime with one ribbon for up to 12 printheads

MLi-NE System

For High Speed Printing

- Outstanding performance in print speed up to 560 high quality prints per minute or up to 300 mm/s
- Longer lasting thermal printheads
- Consistent printing across all lanes with automatic resistance value detection



SPECIFICATIONS COMPARISON

ALLEN MLI SERIES

TE System



NE System



Controller

A:touch2

A:touch2

Communications

Ethernet/Serial

Ethernet/Serial

Frame Size

Height

275 mm

275 mm

Depth

280 mm

280 mm

Width

620 mm /820 mm /1020 mm

620 mm /820 mm /1020 mm

Ribbon

Ribbon Length

1000 mm Max.

1000 mm Max.

Ribbon Width

60 mm

60 mm

Ribbon Diameter

110 mm Max.

110 mm Max.

Ribbon Type

Externally Coated

Externally Coated

Print Area

SYSTEM TYPE

	620	820	1020	620	820	1020
Stroke Area	40/90/140 mm	40/90/140 mm	40/90/140 mm	40/90/140 mm	40/90/140 mm	40/90/140 mm
Max. Print Area	420 mm	620 mm	820 mm	410 mm	610 mm	810 mm
Max. Number of Printheads	8	12	12	7	8	8

Printheads

TRUE EDGE

NEAR EDGE

Max. Number

12

8

Useable Print Width

56 mm

53 mm

Resolution

300 dpi

300 dpi

Print Speed

50-70 mm/Second

90-300 mm/Second

Min. Thermal Bar Pitch

46 mm

60 mm

Max. Throughput

70 Cycles/Minute

70 Cycles/Minute

Resistance

Individual Adjustment

Auto Detects

Operational Mode

Intermittent

Intermittent

Electrical

Voltage

100-240 VAC

100-240 VAC

Frequency

50-60 Hz

50-60 Hz

Current

Max. 20A (100 VAC)

Max. 20A (100 VAC)

Protection

ESD Protected

ESD Protected

Environmental Conditions

Temperature

41°F to 104°F (5°C to 40°C)

41°F to 104°F (5°C to 40°C)

Humidity

40-90%, Non-Condensing

40-90%, Non-Condensing