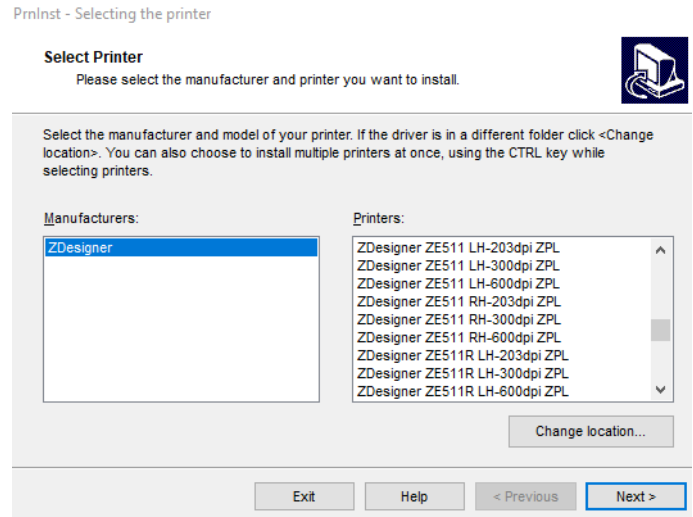
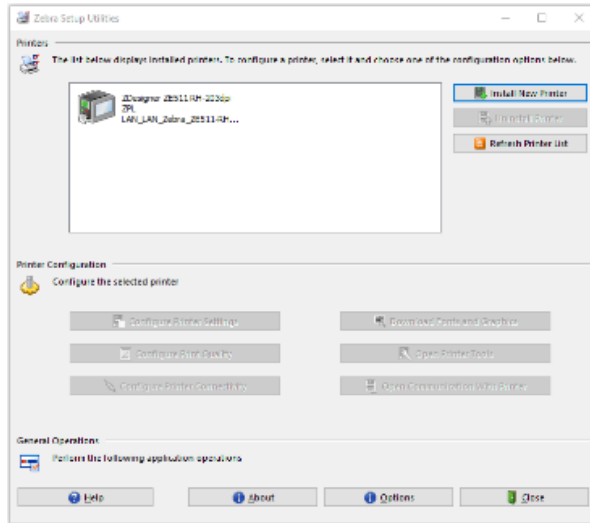


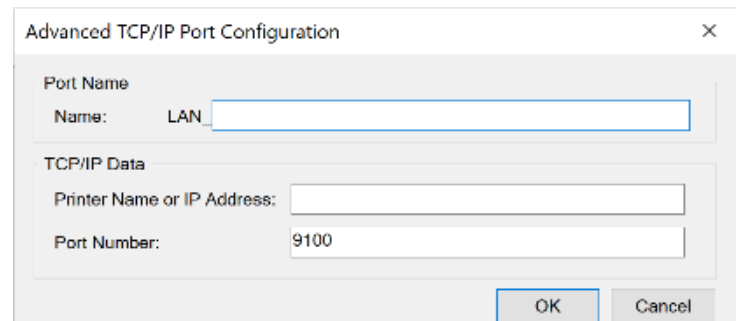
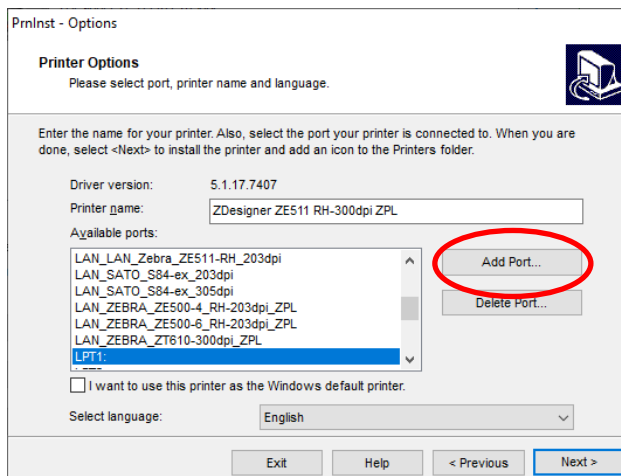
Tasks Unique to The ZE511 / ZE521

- **Set time:**

- 1) Download and install the Zebra Setup Utilities program from the Zebra website (<https://www.zebra.com/us/en/support-downloads/printer-software/printer-setup-utilities.html>).
- 2) Run Zebra Setup Utilities and click “Install New Printer”.
- 3) Click “Next”, “Install Printer”, accept the license terms, “Next”, then select your version of the ZE511 or ZE521 from the pulldown menu and select “Next”.



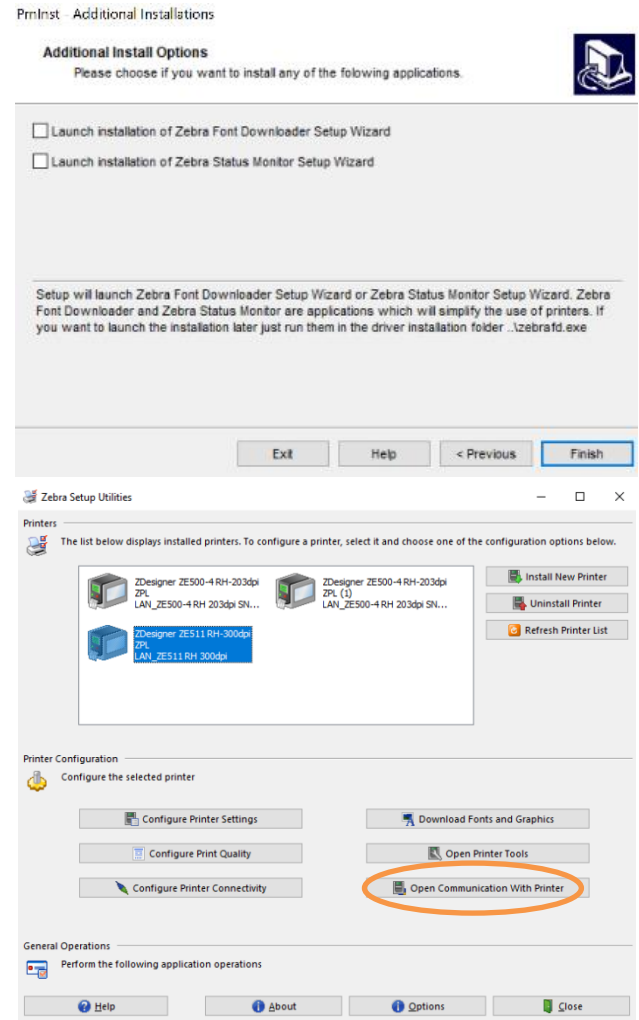
- 4) Click “Add Port”, Next, name the port something you’ll recognize (printer being connected to, production line name, etc.), and enter the printer’s IP address.
 - The printer’s IP address can be found by tapping the printer information button in the upper right corner of the screen.



- 5) Uncheck both wizard installation options unless otherwise desired (neither is necessary for setting the time) and click “Finish”.
- 6) Connect your computer to the printer via ethernet cable.

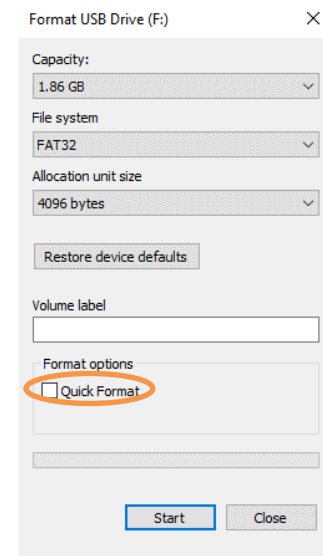
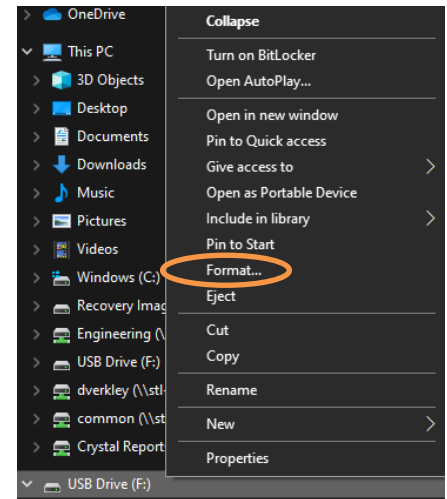
- 7) With your new printer installed select it and click “Open Communication With Printer”.
- 8) Enter the below codes to specify date and time. Ensure that there’s a space after each line and an empty 3rd line at the bottom before sending it to the printer. Time and date are entered in mm-dd-yyyy and hh:mm:ss 24 hour format. Then send it to the print engine.

! U1 setvar "rtc.date" "mm-dd-yyyy"
! U1 setvar "rtc.time" "hh:mm:ss"



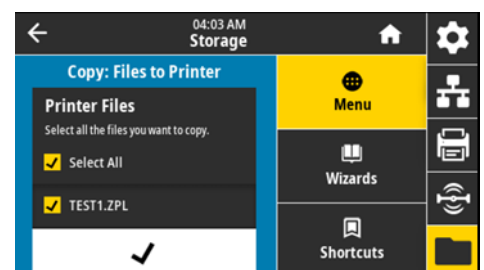
- **Upload ITW factory settings to a new printer:**

- 1) Extract the zip file 404527-CONFIG onto your desktop.
- 2) Configure an empty flash drive to Fat 32 format using the “long formatting” method.
- 3) Right click on the flash drive in the file tree.
- 4) Click “Format” on the pulldown menu.
- 5) Ensure that the “Quick Format” box is unchecked.
- 6)
- 7) Hit “Start” to begin reformatting. This will take some time.
- 8) Be aware that this will erase all the data on your flash drive.
- 9) Copy the “Zebra” file onto the root of your flash drive.
- 10) Note: Do not change the file names of the “Zebra” folder or any other folders in its file tree.
- 11) You are able to copy other files onto the root of the flash drive without interfering with the mirroring process.
- 12) Plug this flash drive into the print engine and allow it to mirror.
- 13) Once the flash drive has mirrored unplug it. It has now reconfigured your print engine and saved the configuration file onto the E: drive of the print engine for future use.
- 14) Run this program on your E: drive at any time to reset the print engine to how it would be leaving Diagraph’s facility.
- 15) This program will not change the network settings, screen orientation, or language setting.



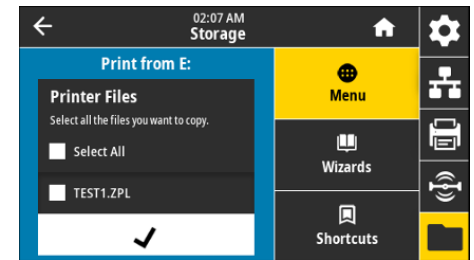
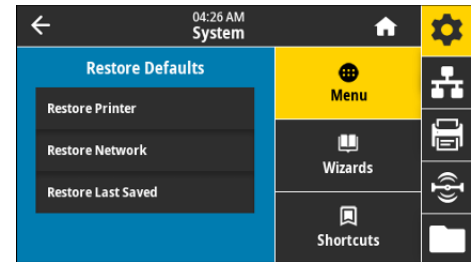
- **Load files to printer memory:**

- 16) Format flash drive to Fat32.
- 17) Load your file onto the root of your flash drive.
- 18) Insert flash drive into the printer USB port.
- 19) Navigate to menu → storage (folder icon) → USB → copy: files to printer.
- 20) Select the check box once file uploading is complete.
- 21) Navigate to menu → storage (folder icon) → Print from E:.
- 22) Select the program(s) you have uploaded.
- 23) Select the check box below the pull-down menu once you have selected the desired program(s).



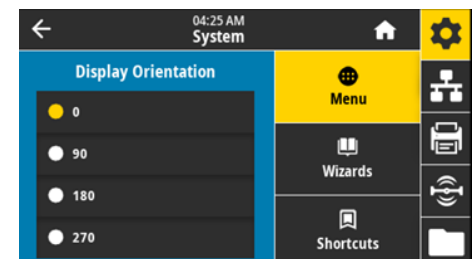
- **Restore ITW factory settings:**

- 1) Navigate to menu → Settings → Restore Defaults → Restore Printer.
- 2) Navigate to menu → storage (folder icon) → Print from E: → select 404527-CONFIG.
- 3) Select the check box at the bottom of the menu.
- 4) The printer will restart. Restoration is now complete.



- **Change screen orientation:**

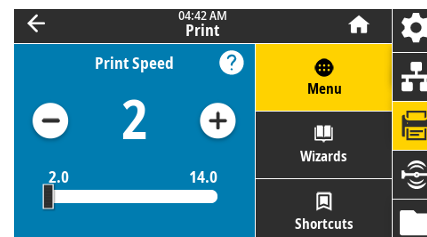
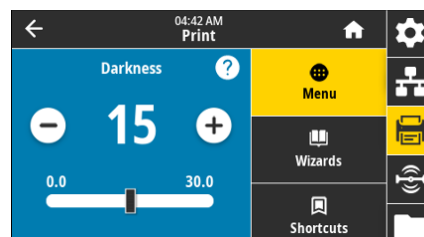
- 1) Navigate to menu → system (should be in this window when first opening the menu) → settings → Display Orientation.
- 2) Select the desired screen orientation.



Standard Printer Setup for The ZE511 / ZE521

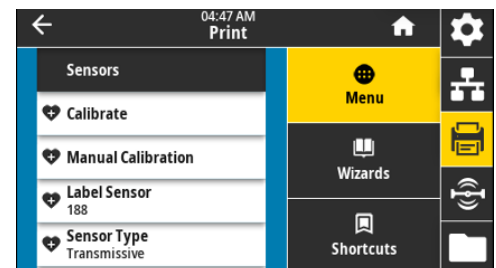
- **Change darkness and print speed:**

- 1) Navigate to menu → print → print quality → then either darkness or print speed and adjust accordingly.
- 2) Press the home or back button to save the setting(s).



- **Calibrate printer:**

- 1) Navigate to menu → print → sensors → then either calibrate or manual calibration
 - Calibrate adjusts the sensor level thresholds and determines label length.
 - Manual calibration adjusts the sensitivity of the media and ribbon sensors, adjusts the sensor level thresholds, and determines label length.



- **Change the tear line offset, horizontal label offset, and the vertical label offset:**

- 1) Navigate to menu → print → image adjust → then either tear line offset, horizontal label offset, or vertical label offset and adjust accordingly.
- 2) Press the home or back button to save the setting(s).

